



TECHNICAL DATA SHEET



V. 01

REV. 01

10 - 05 - 2024

ROTAIR®

powerful >> compact

MDVN

PORTABLE COMPRESSORS

52 Eco 5



AXLE
WITHOUT
BRAKES

695 KG
1532 LB



AXLE
WITH
BRAKES

745 KG
1642 LB



SKID
VERSION

690 KG
1521 LB



COMPRESSOR

Operating pressure	7 bar - 102 psi	10 bar - 145 psi	12 bar - 174 psi	14 bar - 203 psi
Free air delivery	5200 l/min 184 cfm	4100 l/min 145 cfm	4050 l/min 143 cfm	3100 l/min 110 cfm
Minimum working pressure	5 bar			
Drive system engine-aiend	Direct Drive			
Compressor cooling system	Air / Oil			
Oil cooling capacity	8 l			
Outlet valves	2 x 3/4"			
Noise level EECno 2000/14	< 98 LWA			
Battery spec.	12V cc - 750A - 100Ah			
Fuel tank capacity	55 l			
Consumes	9,5l/h @2300rpm			

DIESEL ENGINE

Engine make	Hatz
Engine type	3H50 TICD
Engine system	4 strokes - Diesel
Emissions	Stage V / Tier IV Final
Displacement	1464 cc
N. cylinders	3
Aspiration	Turbo Intercooler
Max engine power @2800 RPM	42 kW
Max engine speed	2300 RPM
Min engine speed	2000 RPM
Cooling system	Water + antifreeze
Cooling system capacity	8 l
Lubrication system	Oil
Lubrication system capacity	5 l

QUALITY OF AIR

Oil in air	1 - 3 PPM
Compressed air temperature	Ambient +40°C Ambient +8°C (WITH OPTIONAL AFTERCOOLER)

ENVIRONMENTAL CONDITIONS

Max ambient temperature	55°C - 122°F
Min working temperature	-10°C / 14°F
Max altitude	1800 m a.s.l.

AXLE WITHOUT BRAKES

WITH ARTICULATED DRAWBAR
Suitable for road traffic



695 KG
1532 LB

AXLE WITH BRAKES

WITH ARTICULATED DRAWBAR
Suitable for road traffic

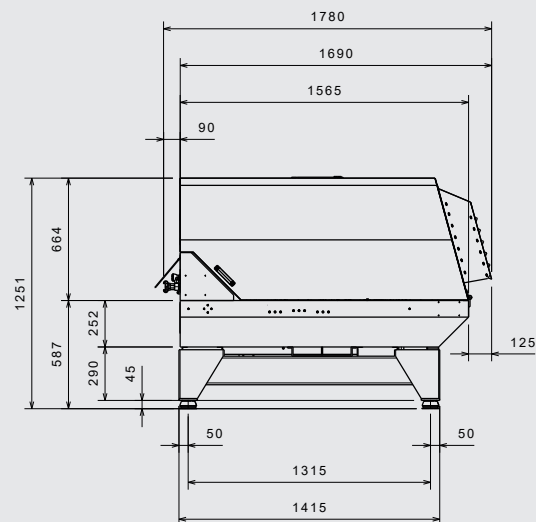
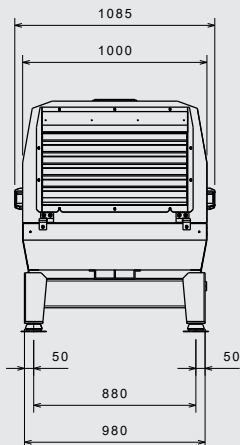
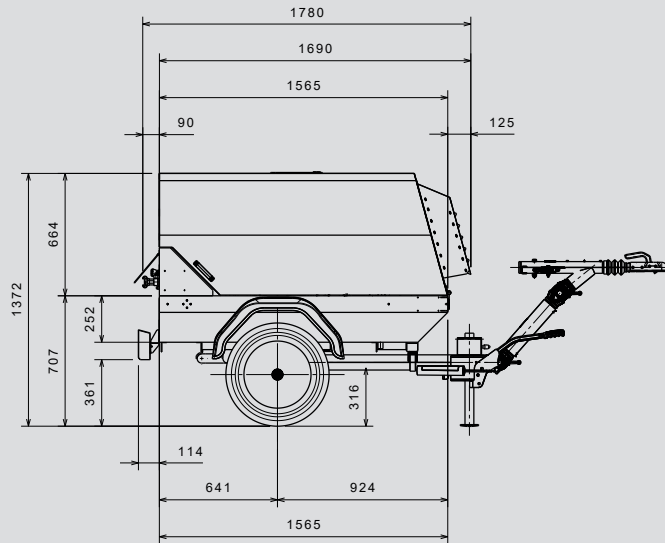
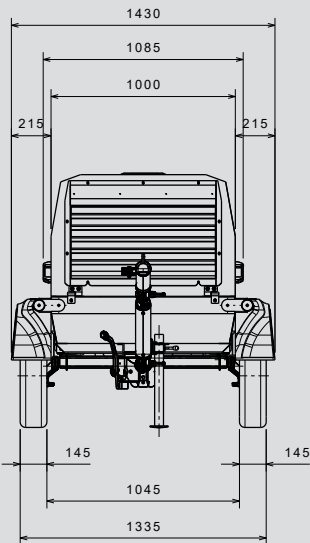
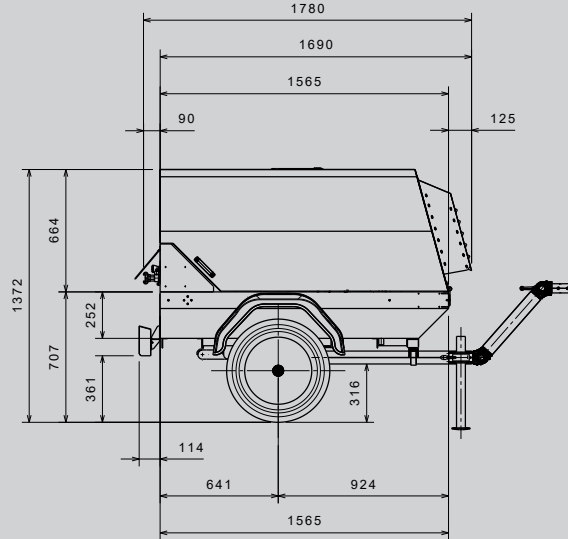
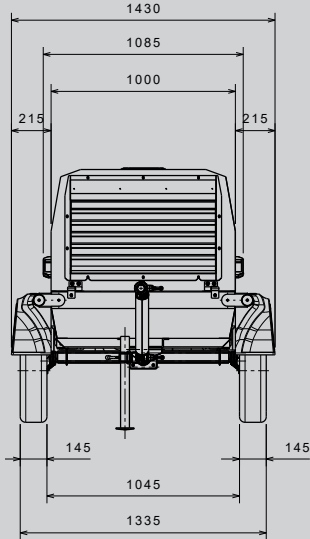


745 KG
1642 LB

SKID VERSION



690 KG
1521 LB



MDVN 52 Eco 5

PORTABLE COMPRESSORS

MAIN FEATURES

OPTIONS & ACCESSORIES

COMPRESSED AIR
FOR CIVIL ENGINEERING

GOMMAIR RANGE

D/DS RANGE

MDVN RANGE

MDVS RANGE

VRK RANGE

VRK FIBER RANGE

VRH RANGE

TVR RANGE

- › Design with modern, slender and aggressive line
- › Electro-galvanized bodywork and chassis with advanced painting procedure to grant an excellent preservation through time
- › Compact dimensions for easy handling and optimum dimensions / delivered power ratio
- › Light weight
- › Filters "spin-on" type for quick maintenance
- › Full accessibility for easy and rapid maintenance and service
- › Exclusive pneumatic control system, developed by ROTAIR, to adjust automatically engine revs, depending on the air to be delivered. This system is highly reliable and ensures fuel consumption saving.
- › Air/oil separator filter, highly oversized, can guarantee an excellent air/oil separation.
- › The air and oil filters of the compressor and the air and oil filters of the engine are independent.
- › Single stage oversized air filter for compressor part, to guarantee good filtering of the air intake by airend. As option, Two-stage air filter.
- › Two-stage air filter for engine part.
- › Combined radiator allowing both compressor oil cooling and engine liquid cooling.
- › Start/stop "INTELLIGENT SYSTEM", exclusive from ROTAIR, to prevent the risk of incorrect procedures during specific functioning.

INTEGRATED AFTERCOOLER WITH A HIGH DEGREE OF DEHUMIDIFICATION

Sandblasting version INTEGRATED to the unit (cooler for compressed air cooling and condensate separator). The more the compressed air is cooled inside the final refrigeration kit of a compressor, the more its efficiency is prompted and the more water vapor condenses, thus allowing easy use of tools such as sandblasting kits.

EXTERNAL AFTERCOOLER WITH A HIGH DEGREE OF DEHUMIDIFICATION (combinable with portable compressors with flow rates from 2000 to 8000 lt/min)

This particular device ensures a quality of the delivered air with low outlet temperature; example: with an ambient temperature of 20 °C, temperature of delivered air is 0-2 °C higher than ambient temperature (for more information see the specific product sheet). The air, largely dehumidified, is an indispensable condition in the execution of particular processes such as: sandblasting - optical fibers installation - use of pneumatic tools sensitive to humidity. The external "BS" device is easy to connect to your portable compressor by means of a special kit of air pipes and is electrically powered by the portable compressor itself. Easily transportable and easy to handle thanks to its wheels, it is the unique and ideal device that satisfies the most severe and demanding operating conditions.

FUEL LEVEL CHECK WITH WARNING LIGHT

important in order to protect the engine from sudden running out of fuel and subsequent choke, cleaning and filter replacement problems, etc

LINE LUBRICATOR FOR PNEUMATIC EQUIPMENT

Provides automatic lubrication to air-operated pneumatic tools to prevent rust and corrosion and steer the tools to have a smoother more effective operation, which prolongs the life of tools.

CONTROL WITH CLOGGING SENSOR FOR ENGINE AIR FILTER

essential accessory in order to avoid bad air supply with the advantage of always having the maximum efficiency of the diesel engine and the supply of compressed air at the correct pressure.

ROTAIR® DELIVERING WORLD-CLASS
COMPRESSORS

Via Bernezzo, 67 - 12023 Caraglio (Cn) - ITALY
Tel: +39 0171.619676 / Fax: +39 0171.619677
www.rotairspa.com | info@rotairspa.com



Azienda
certificata
ISO
9001:2015

ISO 9001

BUREAU VERITAS
Certification



ROTAIR - A brand of
ELGI Equipments Ltd.

Further information available on request. The manufacturer reserves the right to modify the technical characteristics indicated above without prior notice.