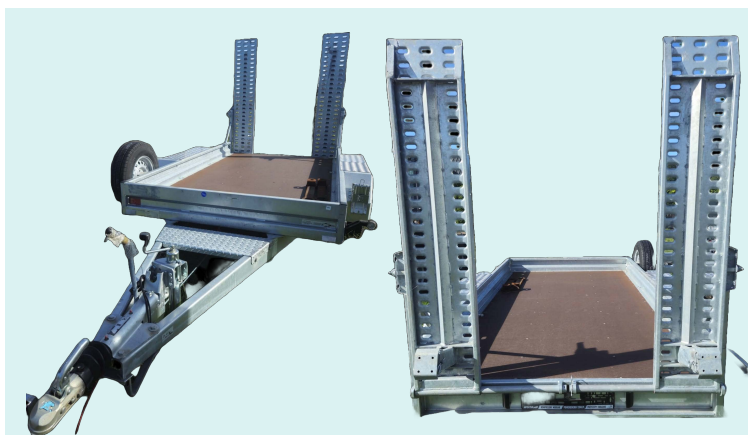


# F10.25.1B



Trailer fit to transport construction machinery and equipment 2500 kg.

## TRAILER CHARACTERISTICS

Dimensions LxWxH	5,1x2,10x1,30 m
Total weight with drum	2500 kg
width of the load space	1600 mm
length of the load space	3050 mm
spare wheel 175R14C, mounted on the side of the ship	
max. axle load	1350 kg
Empty weight	630 kg

## ALSO AVAILABLE TRAILERS WITH DIFFERENT CAPACITY

### STRUCTURE

- frame structure made of closed steel profiles
- welded and hot-dip galvanized
- waterproof, anti-slip floor, 18 mm thick
- spoon shelf
- fixed steel side walls
- the height of the sides to the height of the fender
- at the rear, two 170 cm long entrance gangways can be raised
- possibility of adjusting the spacing of the ramps
- support feet under the gangways
- maneuvering wheel at the front
- metal wheel arches reinforced with aluminum sheet at the top

### EQUIPMENT

2 KNOTT braked axles with a load capacity of 1,350 kg  
 175R14C wheels  
 overrun device controlling the KNOTT trailer brakes  
 brakes with a load capacity of 2700 kg  
 ball coupling 3000kg  
 U-bolt type floor handles, 8 pieces  
 metal wheel chocks with handles on the wheel arches  
 LED marker lighting  
 rear combination lamps

Dimensions and weights are without optional devices. All data may change without notice. Images and drawings are indicative only.