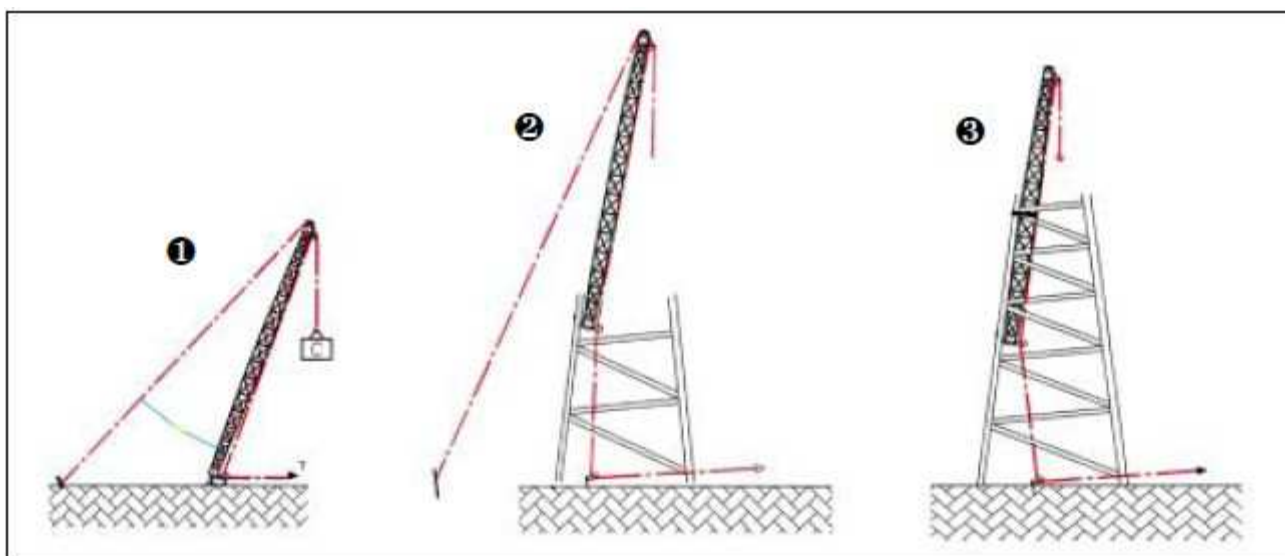
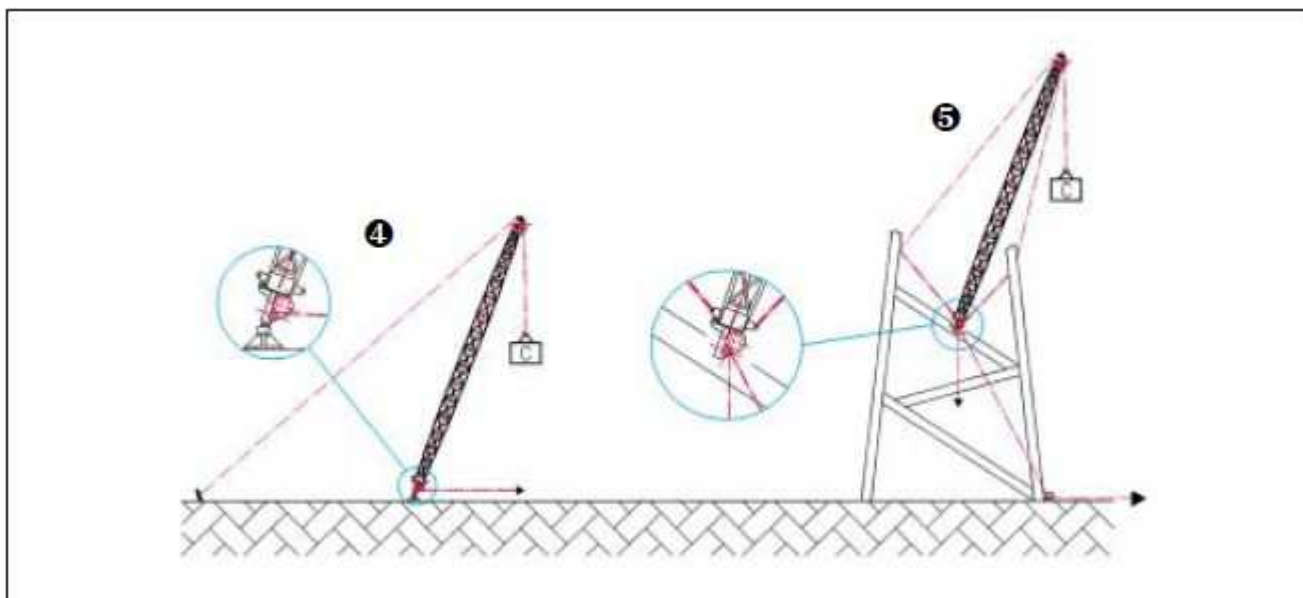


GIN POLES - OMAC C 158 Series

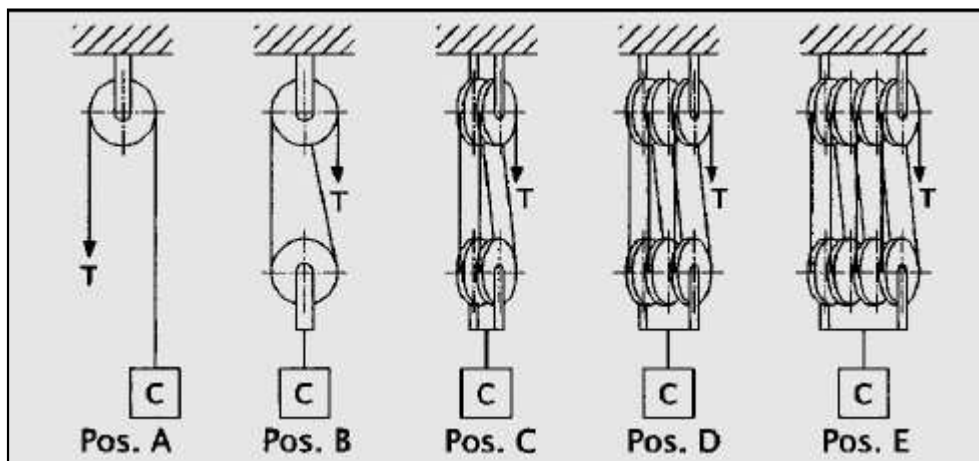
1 - EXTERNAL Rope Passage



2 - INTERNAL Rope Passage



3 – TACKLE Blocks Systems



4 – LIFTING Capacity C + Pulling Capacity T, in function of the TACKLE Blocks System

TYPE OF TACKLE	TOTAL CAPACITY PN	"C"	"T"
A) By SINGLE sheave tackle	100%	50%	50%
B) By TWO sheaves tackle	100%	65%	35%
C) By FOUR sheaves tackle	100%	80%	20%
D) By SIX sheaves tackle	100%	85%	15%
E) By EIGHTH sheaves tackle	100%	90%	10%

5 - FORCES Calculation Example:

Q = Load to Lift

T = Pulling Capacity

S = Loading Capacity required on the Tackle Blocks and/or Pulleys

